



REGIONAL SPECIALISED METEOROLOGICAL CENTRE-TROPICAL CYCLONES, NEW DELHI SPECIAL TROPICAL WEATHER OUTLOOK

DEMS-RSMC TROPICAL CYCLONES NEW DELHI DATED 24.05.2025

SPECIAL TROPICAL WEATHER OUTLOOK FOR NORTH INDIAN OCEAN (THE BAY OF BENGAL AND THE ARABIAN SEA) VALID FOR NEXT 168 HOURS ISSUED AT 0900 UTC OF 24.05.2025 BASED ON 0600 UTC OF 24.05.2025.

ARABIAN SEA:

Sub: Depression over south Konkan coast

The Depression over Eastcentral Arabian Sea and adjoining south Konkan coast moved slowly eastwards with a speed of 5 kmph during past 6 hours and lay centred at 0600 UTC of today, the 24th May 2025 close to south Konkan coast near latitude 17.0° N & longitude 73.3° E, close to Ratnagiri. Latest observations indicate that the depression is crossing the South Konkan coast near Ratnagiri.

After the landfall, it is likely to continue to move eastwards across Madhya Maharashtra and weaken gradually into a well-marked low pressure area during next 24 hours.

As per INSAT 3D (S) imagery at 0600 UTC, the system is centered over eastcentral Arabian Sea off Konkan coast near latitude 17.2°N/73.2°E. The associated intensity of the system is T1.5. The clouds are organized in shear pattern. Associated scattered to broken low and medium clouds with embedded intense to very intense convection lay over southeast, Eastcentral & adjoining Northeast Arabian Sea and along & off Konkan, Goa, Karnataka and South Gujarat coasts and Lakshadweep area. The cloud top temperature (CTT) is -60°C to -90°C. Scattered low and medium clouds with embedded moderate to intense convection lay over Gulf of Cambay and Maldives area.

The associated estimated central pressure is 998 hPa and the associated maximum sustained wind speed is 25 kt gusting to 35 kt.

BAY OF BENGAL:

A low-pressure area is likely to form over westcentral and adjoining north Bay of Bengal around 27th May, 2025. It is likely to become more marked during subsequent 2 days.

Scattered low and medium clouds with embedded intense to very intense convection lay over central & south Bay of Bengal & Andaman Sea. Scattered low and medium clouds with embedded moderate to intense convection lay over north Bay of Bengal

***PROBABILITY OF CYCLOGENESIS (FORMATION OF DEPRESSION) DURING NEXT 168 HRS:**

24 HOURS	24-48 HOURS	48-72 HOURS	72-96 HOURS	96-120 HOURS	120-144 HOURS	144-168 HOURS
NIL	NIL	NIL	NIL	LOW	LOW	-

***NOTE: EVERY 24HR FORECAST IS VALID UPTO 0300 UTC (0830 IST) OF NEXT DAY**

“-“Not applicable

Cloud distribution: (a) Isolated: <25%, Scattered:25-50%, Broken: 51-75%, Solid:>75%, Convection Intensity: (a) Weak: Cloud Top Temperature (CTT) >-25°C, (b) Moderate: CTT: - 25°C to -40°C, (c) Intense: CTT: - 41°C to -70°C and (d) Very Intense: : Less than -70°C
PROBABILITY OF CYCLOGENESIS (FORMATION OF DEPRESSION):NIL: 0%, LOW: 1-33%, MODERATE: 34-66% AND HIGH: 67-100%
This is a guidance Bulletin for WMO/ESCAP Panel Member countries. Visit respective National websites for Country specific Bulletins

Remarks:

As the system is moving slowly and interacting with the land surface, due to its proximity to the coast, it is unlikely to intensify further. With the supportive favorable environment like low to moderate mid-level vertical wind shear, strong surge in advancing monsoon current and both poleward & equatorward outflow and warm sea surface temperature (30-32°C), the system intensified into a depression over eastcentral Arabian Sea. The outflow would support upper level divergence. The positive low level vorticity is $70-80 \times 10^{-5} \text{ s}^{-1}$ at 850 hPa level and vertically extending upto 500 hPa. The low level convergence is $20 \times 10^{-5} \text{ s}^{-1}$ and upper level divergence is $30 \times 10^{-5} \text{ s}^{-1}$ to the southwest of system. In contrast to various predictions by models in past about its north northwestwards movement, the system is moving eastwards. It is attributed to the fact that the system did not intensify and thus vertically extended upto mid tropospheric levels. The system is being steered eastwards under the influence of westerly winds in lower and middle tropospheric levels. The composite wind analysis of various levels also indicates westerly trough passing to the north of the system area. As a result of all these, the depression is supporting the advance of monsoon over south peninsular India. It would also support both advance of monsoon over the Arabian Sea & Bay of Bengal and more parts of north peninsular India and adjoining central India during next 3 to 5 days.

Over the Bay of Bengal, the conditions are favourable for development of low pressure area with warm sea surface temperature (30-32°C), favourable Madden Julian Oscillation (phase 4&5 during next 7 days), strong westerly wind anomaly (5-7 mps) over the south Bay of Bengal and low to moderate vertical wind shear over north and adjoining central Bay of Bengal.

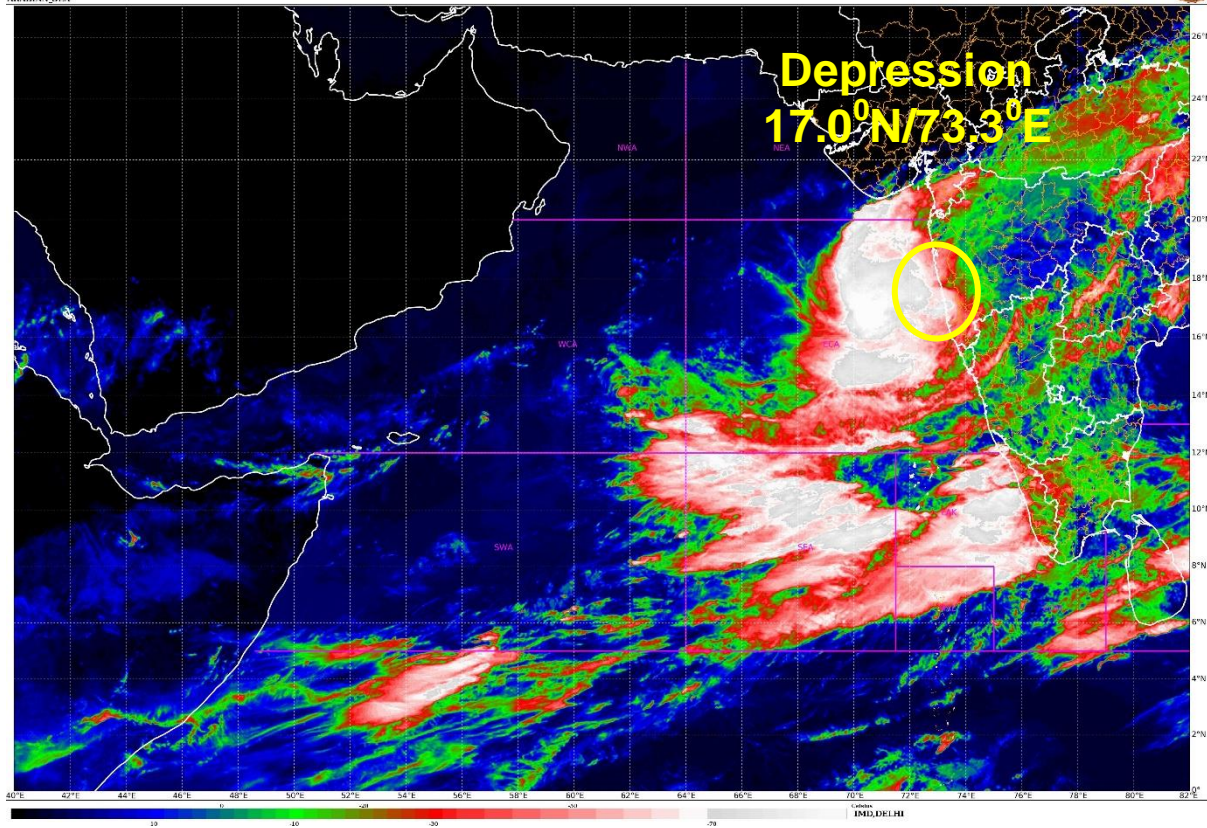
Some of the models are suggesting that, after landfall the existing depression over eastcentral Arabian Sea would move across Maharashtra, Telangana & Andhra Pradesh and emerge into westcentral & northwest Bay of Bengal around 27th May. It would lead to the formation of low pressure area over same region. Gradually it is predicted to move north northwestwards and may lead to enhancement of monsoon current over the Bay of Bengal.

THE NEXT BULLETIN WILL BE ISSUED AT 1500 UTC BASED ON 1200 UTC OF 24TH MAY, 2025.

(Monica Sharma)
Sc.D, RSMC, NEW DELHI

SAT : INSAT-3DR IMG
 IMG11R1 3:05PM 16.8 um
 ARABIAN_SPA

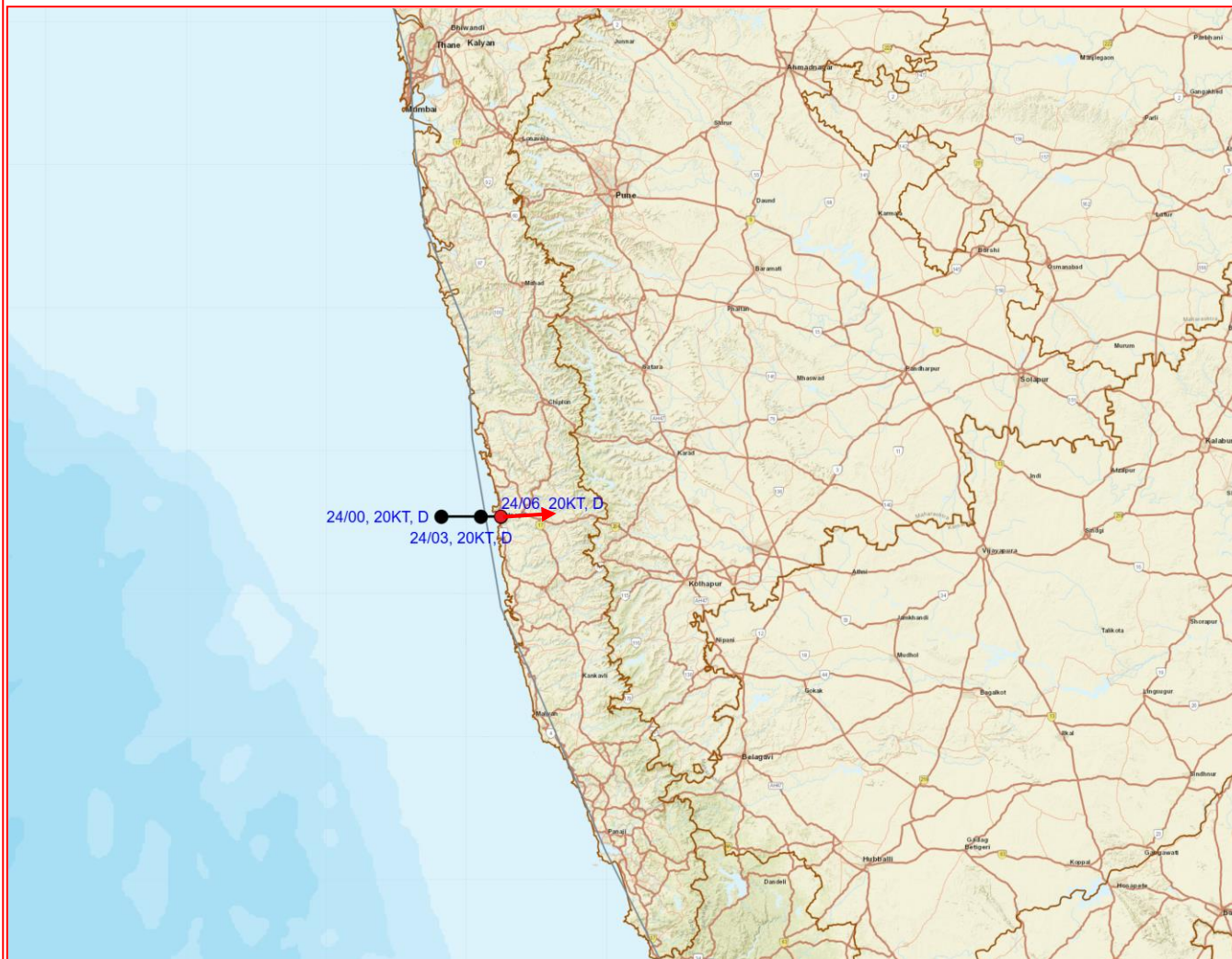
24-05-2023/0915 to 0942) GMT
 24-05-2023/1145 to 1212) IST



Cloud distribution: (a) Isolated: <25%, Scattered:25-50%, Broken: 51-75%, Solid:>75%, Convection Intensity: (a) Weak: Cloud Top Temperature (CTT) >-25°C, (b) Moderate: CTT: - 25°C to -40°C, (c) Intense: CTT: - 41°C to -70°C and (d) Very Intense: : Less than -70°C
 PROBABILITY OF CYCLOGENESIS (FORMATION OF DEPRESSION):NIL: 0%, LOW: 1-33% , MODERATE: 34-66% AND HIGH: 67-100%
 This is a guidance Bulletin for WMO/ESCAP Panel Member countries. Visit respective National websites for Country specific Bulletins



OBSERVED AND FORECAST TRACK OF DEPRESSION OVER EASTCENTRAL ARABIAN SEA AND ADJOINING SOUTH KONKAN COAST BASED ON 0600 UTC (1130 IST) OF 24th MAY, 2025



DATE/TIME IN UTC

IST=UTC + 0530

L: LOW PRESSURE AREA

WML: WELL MARKED LOW PRESSURE AREA

D: DEPRESSION (17-27 KT)

DD: DEEP DEPRESSION (28-33 KT)

CS: CYCLONIC STORM (34-47 KT)

SCS: SEVERE CYCLONIC STORM (48-63KT)

VSCS: VERY SEVERE CYCLONIC STORM (64-89 KT)

ESCS: EXTREMELY SEVERE CYCLONIC STORM (90-119 KT)

SuCS: SUPER CYCLONIC STORM (\geq 120 KT)

● LESS THAN 34 KT

○ 34-47 KT

○ \geq 48 KT

— OBSERVED TRACK

— FORECAST TRACK

▲ CONE OF UNCERTAINTY

Fishermen Warning Graphics

Day 1: 24.05.2025/11:30AM to 25.05.2025/05:30AM



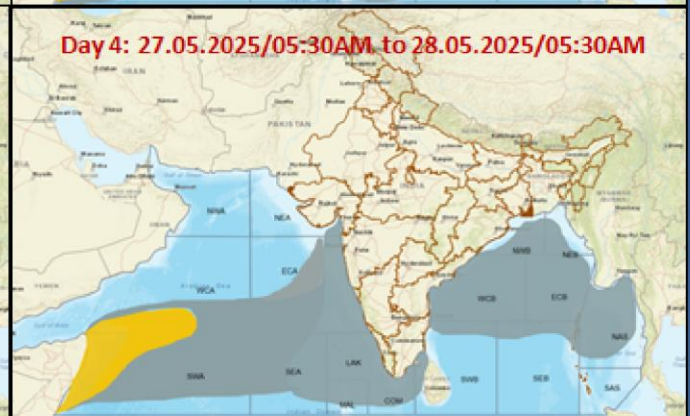
Day 2: 25.05.2025/05:30AM to 26.05.2025/05:30AM



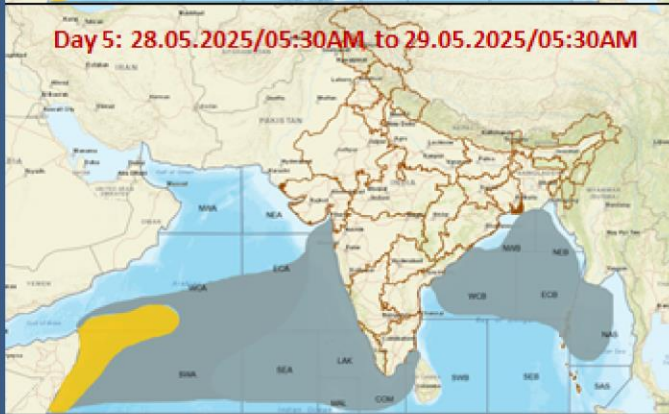
Day 3: 26.05.2025/05:30AM to 27.05.2025/05:30AM



Day 4: 27.05.2025/05:30AM to 28.05.2025/05:30AM



Day 5: 28.05.2025/05:30AM to 29.05.2025/05:30AM



Squally Weather with wind speed 35-50 kmph gusting to 60 kmph

Squally weather with wind speed 45-55 kmph gusting to 65 kmph

Squally wind with speed 45-55 kmph gusting to 65 kmph

Fishermen are advised not to venture into the marked areas.